

GE Nav v3.0

The next generation in
DVR/NVR management



Overview

GE Nav v3.0 represents the latest advancement in video management software. This single application delivers centralized and remote video management capabilities combined with backward compatibility to accommodate GE DVRs and NVRs. Ideal for LAN or WAN applications, GE Nav v3.0 is well suited for any application incorporating multiple sites and cameras:

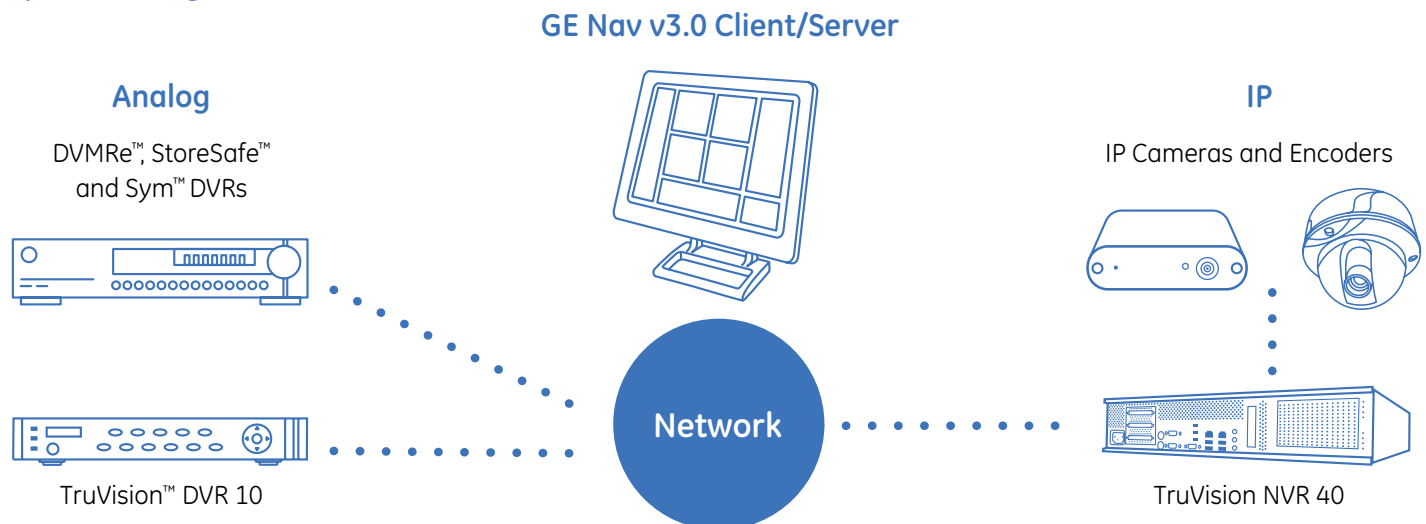
- Schools
- Retail stores
- Geographically dispersed organizations
- Transportation
- Entertainment venues
- Homeland security and public safety

From a single, easy-to-use and reliable GUI, administrators can remotely configure users/groups, DVRs/analog cameras, NVRs/IP cameras and monitor thousands of video surveillance components. At any time, from any location, operators can cost-effectively provide accurate and timely security response. Backed by client/server architecture, GE Nav v3.0 is a fully scalable solution that can support applications ranging from enterprise IT environments down to small, stand-alone systems.

Standard Features

- Backward and forward compatibility to protect investment in legacy equipment
- Flexible technology, including analog and IP compatibility, meets current and future needs
- Scalable software architecture from enterprise IT to stand-alone systems
- Remote software distribution alleviates need to ship media
- Centralized administration reduces administrative workload and security risk
- Health diagnostic service automatically polls for data to maintain constant system uptime
- Device notifications aid in proper tracking and expedite issue resolution
- Remote device configuration reduces administration time and costly site visits
- Scheduled tasks take place during low-bandwidth hours to optimize capacity during peak-demand times
- Multi-site feature integrates all GE platforms in a single video display
- Custom views allow for user-specified groupings of video streams to deliver the right video at the right time
- Network Time Protocol (NTP) service keeps all system devices synchronized with appropriate time and date
- Evidence Player plays exported video with a max 9-up display, print and snapshot capability, synchronous playback, timeline search, and full-screen mode

System Diagram



System is powerful enough to accommodate either analog or IP camera installations, or a mixture of the two.

Key Functions

Notifier – Collect and manage any notifications sent from the various devices.

Navigator – Provides access to all DVRs, NVRs and cameras in a system with minimal clicks to pinpoint specific video objects.

Help – Offers detailed system instructions as well as information on GE Nav versions and copyrights.

Viewer – View live and recorded video selected from the Notifier, Navigator or Collector.

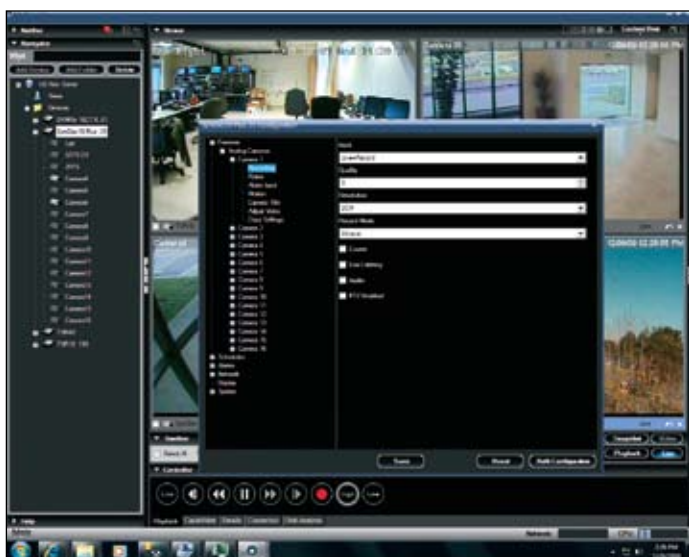
Timeline – Seek and play recorded video at any point along a pre-selected time interval.

Controller – View or edit the properties of currently selected objects in the Navigator.

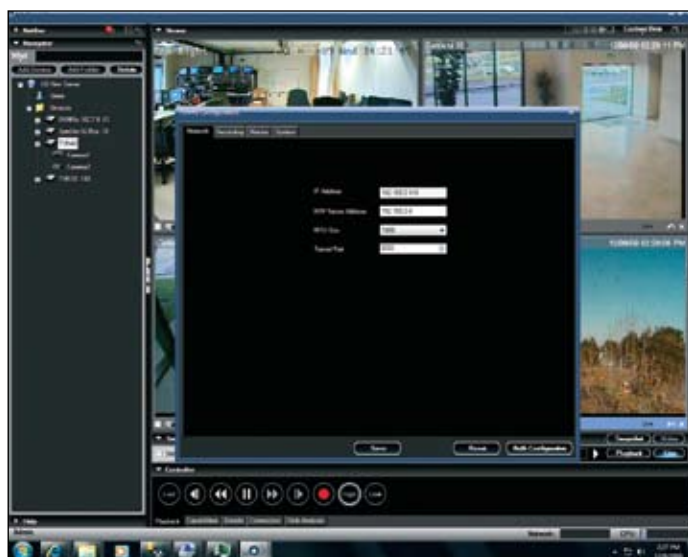
Collector – Acts as a holding repository for video segments, snapshots and local recordings ready for export.

Tasks – Provides one central place to monitor the progress of the tasks created in the system, such as video exports, firmware upgrades, bulk DVR configurations and database backup and restores.

GE Nav presents one, common interface to the user no matter what the device or camera type. This greatly improves organizational efficiency by reducing set-up time and minimizing training requirements.

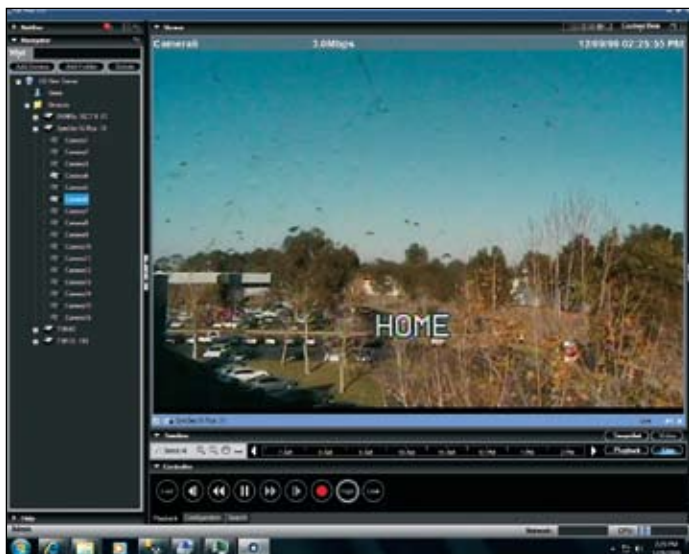


Configuration DVR

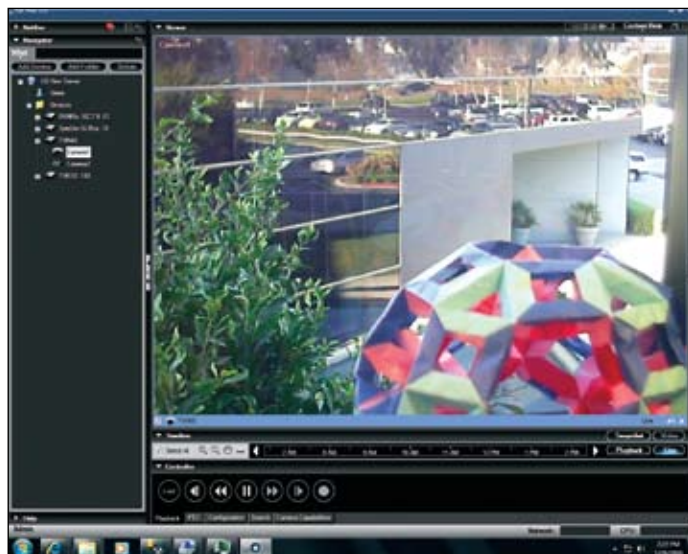


Configuration NVR

For the user, remote configuration of a DVR or NVR is seamless and just 2 clicks away – no need to launch different applications or browsers.



Live Video DVR



Live Video NVR

Obtaining live video is a double-click away, regardless of the device. Once viewed, snapshots, local recordings, full-screen mode, instant replay, and playback are all afforded with minimal clicks.

North America
T 888-GE-SECURITY
888-437-3287

Asia
T 852-2907-8108
F 852-2142-5063

Australia
T 61-3-9239-1200
F 61-3-9239-1299

Europe
T 32-2-725-11-20
F 32-2-721-40-47

Latin America
T 305-593-4301
F 305-593-4300

gesecurity.com

Specifications subject to
change without notice.

© 2010 General Electric Company
All Rights Reserved

Specifications

Client Requirements: Hardware

	High-end	Recommended	Minimum
CPU	Intel® Core™ 2 Duo Processor, 3.4 GHz, 4MB Cache	Intel® Core™ 2 Duo Processor, 2.33 GHz, 4MB Cache	Intel® Pentium® 4 Processor, 2.8 GHz
RAM	4GB	2GB	1GB
Video card	512MB ATI Radeon™ 4800, with Pixelshader capability, Comparable 512MB NVIDIA® GeForce™ 9800 GTX+	256MB ATI Radeon™ 2400XT or comparable 256MB NVIDIA® GeForce™ 6200	AGP or PCI Express, 128MB DDR Memory
Hard drive	200MB	200MB	200MB
Network	1000 Ethernet Interface Card	10/100 Ethernet Interface Card	10/100 Ethernet Interface Card
Monitor	1280x1024, 32-bit color	1280x1024, 32-bit color	1024x768, 32-bit color

Client Requirements: Software

- Microsoft® Windows XP Pro SP2 or higher 32-bit (prerequisite) or
- Microsoft Windows Vista Business SP1 32-bit (prerequisite)
- Microsoft .Net Framework 2.0 (packaged with installation)

Server Requirements: Hardware (minimum)

CPU	Intel Core 2 Duo Processor, 2.33 GHz, 4MB Cache
RAM	2GB
Video card	256MB ATI Radeon 2400XT or comparable 256MB NVIDIA GeForce 6200 (video card is optional depending on whether or not you want to view video from a client on the server)
Hard drive	At least 5GB of storage or more (this amount of storage is widely dependant on whether or not the database is being hosted on the server, the size of the actual database and whether or not you want to store video on the server)
Network	10/100 Ethernet Interface Card
Monitor	1024x768, 32-bit color (the monitor is optional depending on whether or not you want to view video from a client on the server)

Server Requirements: Software

Operating System

- Microsoft Windows Server® 2003 R2 Standard Edition (prerequisite) or
- Microsoft Windows XP Pro SP2 or higher 32-bit (prerequisite) or
- Microsoft Windows Vista Business SP1 32-bit (prerequisite)
- Microsoft .Net Framework 2.0 (packaged with installation)

Web Service

- Microsoft Internet Information Services (IIS) 6.0+ (prerequisite) or
- Cassini (packaged with installation)

Database

- SQL 2005 (however, SQL Express 2005 is packaged with the installation)

Supported NVRs/DVRs Firmware

NVR Compatibility*	Supported Firmware
TruVision™ NVR 40	4.2.1.53820
DVR Compatibility	Supported Firmware
TruVision DVR 10	V2.0, Build 090722
SymDec™ 16 plus 4	1.46r, 1.47k, and 1.51e
SymDec 1	1.47e and 1.48a
SymDec 4	1.47e and 1.48a
SymSafe™ Pro 4/8/16	1.27b, 1.28i, and 1.30b
SymSafe Basic 4/8/16	1.27b, 1.28i, and 1.30b
DVMRe™ CS Series 4/10/16	5.21
DVMRe CT (Triplex) Series 4/10/16	5.68a and 5.69
DVMRe Pro Series 4/10/16	5.68a and 5.69
DVMRe ezT Series 4/10/16	5.68a and 5.69
DVMRe CD Series 4/10/16	3.24
DVMRe CT II Series 4/10/16	6.28a and 6.29
StoreSafe™ DVR Series 4/10/16	5.68a and 5.69
StoreSafe DVR PII Series 4/10/16	6.28a and 6.29
StoreSafe DVR Advanced Series 4/10/16	6.28a and 6.29
DSR	2.23d and 2.24a
DVSe Series – Storage device	1.20g, 1.41w, and 3.04

*GE Nav v3.0 supports GE and third-party IP cameras via the TruVision NVR 40. For a full list of devices, please visit www.gesecurity.com/truvision.

