

Overview

SymSafe™ delivers “hybrid” recording that works with any analog security camera as well as GE’s IP network products. This unique platform provides a migration path to IP recording and at the same time allows continued use of existing analog equipment.

The SymSafe family of MPEG-4 Digital Video Recorders (DVRs) are versatile workhorses. Feature rich and designed for ease-of-use, this DVR family extends the SymSuite™ family video solution. Used as a stand alone DVR or as part of a networked video solution, SymSafe delivers real-time video recording up to 480 fps NTSC (400 fps PAL) at 2-CIF resolution.

GE Security software allows viewing of live and recorded video from multiple SymSafe and SymSafe Pro units. Available in 4, 8, and 16 analog channel models, each SymSafe model also records up to two IP streams.

It's easy to network and view images from the DVRs via 10/100/1000 BaseT Ethernet; use Dynamic Domain Name Server (DDNS) for access through an easy-to-remember name instead of an IP address.

Programming is easy, and the remote software provides many options to view live and previously recorded video or to configure the SymSafe.

SymSafe

The SymSafe model provides up to 480 fps at CIF and 120 fps at D1 resolution. It has six quality settings, two audio channels and e-mail notification; it permits up to five users and programming of 15 macros.

SymSafe Pro

The SymSafe Pro model delivers up to 480 fps at 2-CIF and 240 fps at D1 resolution. It also offers export of the log data, motion search and protect on alarm, as well as up to 10 users and 30 macros.

Standard Features

- Real-time MPEG-4 recording up to 18 channels at 2-CIF
- Hybrid DVR with 2 IP streams and 2 audio inputs
- Unique “light bar” alarm indicator
- Integrated solution: SymSuite software
- Archive via USB 2.0
- Continuous, Motion Detection, Alarm and Scheduled Recording modes
- Network bandwidth throttling
- PTZ control
- Up to 1.5 TB internal storage
- Cooling Tunnel™ design extends HDD life
- Video specific hard drives for improved reliability
- CD/DVD-RW burner
- VGA and composite video output
- IR remote included

SymSafe and SymSafe Pro

hybrid digital video recorders

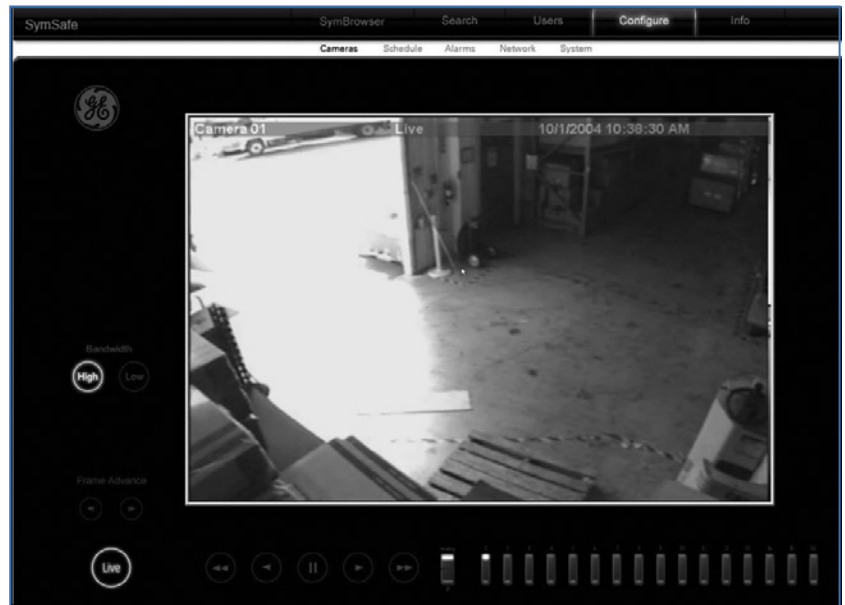


SymBrowser Remote Software

Deployed right from the SymSafe DVR, SymBrowser is a thin-client that provides live video and audio, search and playback, and configuration. The SymSafe On Screen Display (OSD) provides an easy-to-use interface as shown below.



SymSafe On Screen Display: Main Menu



SymBrowser Remote Software

Specifications

Video

- Video signal input: 1 V p-p nominal, AGC range 0.7 to 1.4 V
- Video signal output: 1 V p-p at 75 ohm
- Input termination: 75 ohm
- Horizontal resolution: 720 pixels
- Vertical resolution: 540 lines
- Video compression standard: MPEG-4
- Recording resolutions supported: D1, 2-CIF, CIF

Audio

- Audio input: 315 mV, 400 kohms, unbalanced
- Audio output: 315 mV, 600 ohms, unbalanced
- Audio compression standard: MPEG-1

Electrical

- Power supply: 120 to 240 VAC, internal auto-ranging

Connectors

- Accessory I/O ports: RS-485/422 (2), RS-232 (1), alarm input (4, 8, 16), Form C alarm relay (2), USB (3)
- RS-232 serial port: DB-9
- Composite video in: Looping BNC (4, 8, 16)
- Monitor A video out: BNC composite (1), VGA (1)
- Monitor B video out: BNC composite
- Audio in: RCA (2)
- Audio out: RCA (1)
- 10/100/1000 Ethernet port: RJ-45

Environmental

- Operating temperature: 32 to 104°F (0 to 40°C)
- Storage temperature: -4 to 140°F (-20 to 60°C)
- Relative humidity (noncondensing): 10 to 95%

Physical

- Dimensions (HxWxD): 3.5 x 15.5 x 16 in. (89 x 394 x 406 mm)
- Cooling Tunnels

Regulatory

- UL60950-1/CSA C22.2 60950-1
- CISPR 22: 1997 (FCC Part 15, Sub-part B, Class A limits)

Application

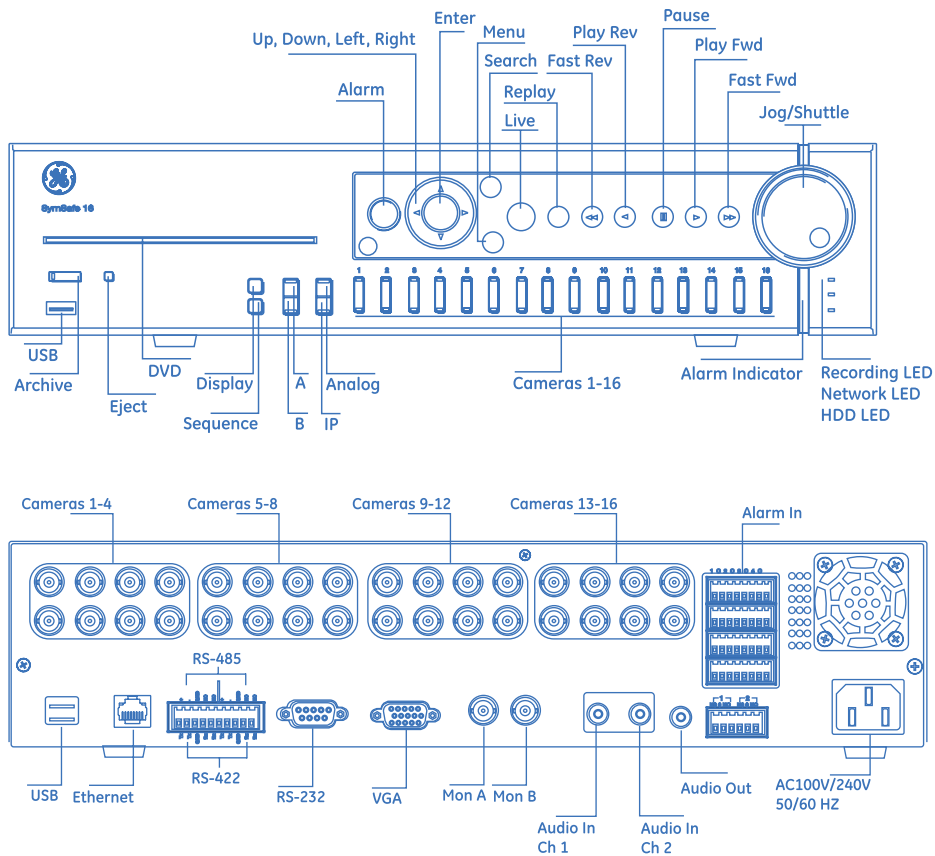
Excellent recording quality, scalability and compatibility make the SymSafe line of hybrid recorders a good fit for installations such as schools and retail.

SymSafe and SymSafe Pro are also well suited to branch banking, as well as any commercial installation requiring solid video performance at a competitive price.

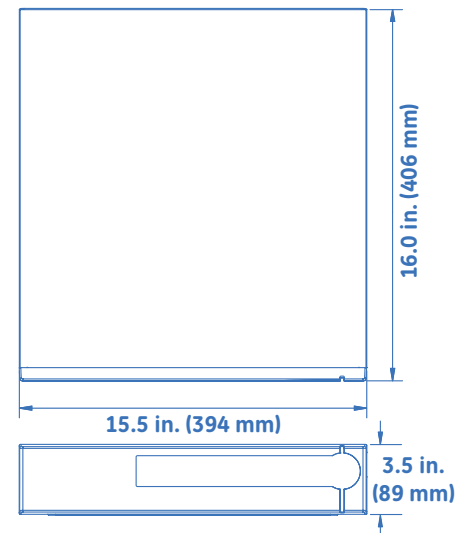
Video Recording Speed and Resolutions

NTSC format	Per channel (average)			Per DVR (max.)		
	D1	2CIF	CIF	D1	2CIF	CIF
SymSafe 4+2	7.5 fps	15 fps	30 fps	30 fps	60 fps	120 fps
SymSafe 8+2	7.5 fps	15 fps	30 fps	60 fps	120 fps	240 fps
SymSafe 16+2	7.5 fps	15 fps	30 fps	120 fps	240 fps	480 fps
SymSafe Pro 4+2	15 fps	30 fps	30 fps	60 fps	120 fps	120 fps
SymSafe Pro 8+2	15 fps	30 fps	30 fps	120 fps	240 fps	240 fps
SymSafe Pro 16+2	15 fps	30 fps	30 fps	240 fps	480 fps	480 fps

Diagrams Front and Back Panels



Dimensions



Available Models

SymSafe DVR	Features	SymSafe Pro DVR	Features
SymSafe4+2-160	SymSafe hybrid DVR with 4 analog/2 digital channels, 160GB HDD	SymSafePro4+2-320	SymSafe Pro hybrid DVR with 4 analog/2 digital channels, 320GB HDD
SymSafe4+2-320	SymSafe hybrid DVR with 4 analog/2 digital channels, 320GB HDD	SymSafePro4+2-640	SymSafe Pro hybrid DVR with 4 analog/2 digital channels, 640GB HDD
SymSafe4+2-640	SymSafe hybrid DVR with 4 analog/2 digital channels, 640GB HDD	SymSafePro4+2-1T	SymSafe Pro hybrid DVR with 4 analog/2 digital channels, 1TB HDD
SymSafe8+2-160	SymSafe hybrid DVR with 8 analog/2 digital channels, 160GB HDD	SymSafePro8+2-320	SymSafe Pro hybrid DVR with 8 analog/2 digital channels, 320GB HDD
SymSafe8+2-320	SymSafe hybrid DVR with 8 analog/2 digital channels, 320GB HDD	SymSafePro8+2-640	SymSafe Pro hybrid DVR with 8 analog/2 digital channels, 640GB HDD
SymSafe8+2-640	SymSafe hybrid DVR with 8 analog/2 digital channels, 640GB HDD	SymSafePro8+2-1T	SymSafe Pro hybrid DVR with 8 analog/2 digital channels, 1TB HDD
SymSafe16+2-160	SymSafe hybrid DVR with 16 analog/2 digital channels, 160GB HDD	SymSafePro8+2-1.5T	SymSafe Pro hybrid DVR with 8 analog/2 digital channels, 1.5TB HDD
SymSafe16+2-320	SymSafe hybrid DVR with 16 analog/2 digital channels, 320GB HDD	SymSafePro16+2-320	SymSafe Pro hybrid DVR with 16 analog/2 digital channels, 320GB HDD
SymSafe16+2-640	SymSafe hybrid DVR with 16 analog/2 digital channels, 640GB HDD	SymSafePro16+2-640	SymSafe Pro hybrid DVR with 16 analog/2 digital channels, 640GB HDD
		SymSafePro16+2-1T	SymSafe Pro hybrid DVR with 16 analog/2 digital channels, 1TB HDD
		SymSafePro16+2-1.5T	SymSafe Pro hybrid DVR with 16 analog/2 digital channels, 1.5TB HDD
SymSafe Accessories			
SymSafe-RK		Rack-mount brackets, pair	

GE Security

North America
T (503) 885-5700
T 888-GE-SECURITY
888-(437-3287)
E info@gesecurity.com

Asia
T 852-2907-8108
F 852-2142-5063

Australia
T 61-3-9259-4700
F 61-3-9259-4799

Europe
T 32-2-725-11-20
F 32-2-721-40-47

Latin America
T 305-593-4301
F 305-593-4300

www.gesecurity.com

Specifications subject to change without notice.

©2007 General Electric Company
All Rights Reserved



imagination at work